



2024-25: OUR 29TH SEASON



PLAYBILL



THE HIRT THEATER



BULLY



An Adventure with Teddy Roosevelt

PRESENTED THROUGH SPECIAL ARRANGEMENT WITH CONCORD THEATRICALS

SPONSORED BY ART@106

Playbill Author - Floyd Collins



bellevuearts.net

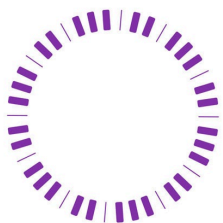
MARTY SIEGEL *President* DERIC MARBAUGH *Vice President*
KEITH ROBINSON *Treasurer* SHARON MUSSER *Secretary*
— TRUSTEES —
Sheri Ammanniti Leslie Shanaman Floyd Collins Doug Franks Juliet Russell
JIMY FOREMAN *Artistic Director*

BULLY

An Adventure with Teddy Roosevelt

By Jerome Alden

DIRECTED BY DAVID AILING



CONCORD
THEATRICALS

Presented through special arrangement with
Concord Theatricals

THE VIDEOTAPING OR MAKING OF ELECTRONIC OR OTHER AUDIO AND/OR VISUAL RECORDINGS OF THIS PRODUCTION AND DISTRIBUTING RECORDINGS OR STREAMS IN ANY MEDIUM, INCLUDING THE INTERNET, IS STRICTLY PROHIBITED, A VIOLATION OF THE AUTHOR(S)'S RIGHTS, AND ACTIONABLE UNDER UNITED STATES COPYRIGHT LAW. FOR MORE INFORMATION, PLEASE VISIT:

<https://concordtheatricals.com/resources/protectingartists>



PRODUCTION TEAM

Director- David Ailing

Assistant Director- Mary Ailing

Board Liaison- Floyd Collins

Music/Vocal Director- Marianne Webb

Stage Manager- Cathy Schaffer

Light Design- Adam Shanaman

Light Operator- Brian Boies

Sound Design/Operator- Will Mitchell

Spot Operator- Jessie Jarrett, Lance

Laughlin

Costumes- David Ailing, Mary Ailing,

Drew Schlegel

Props- David Ailing, Mary Ailing, Drew

Schlegel, David Riegel

Set Design- David Ailing

Set Construction- Dave Riegel

Special Thanks

Special Thanks:

Brad Rowe

BSA Board Members

Helen Kaiser

Juliet Russell

John Webb

Kay Ellis

Valerie Schlegel

Pam Fetterhoff



The Mylander
Foundation



Thank you for the upgraded lighting.



Thank you to Sandusky County
Communities Foundation for
grant to pay for security
cameras.

FROM THE DIRECTOR



My journey with Theodore Roosevelt started in 2012, when my brother gifted me a copy of the third installment of Edmund Morris' penultimate biography of our 26th President. Somewhat perturbed by reading a trilogy out of order, I quickly realized it made no difference as you can begin reading about 'Teddy' at any point in his life and encounter uniquely different adventures and achievements.

Jerome Alden's Play poignantly translates these historic events for the stage, giving us a witty and brilliant script that captures the essence of one of our greatest Presidents.

As we bring this production to the stage, we invite you to reflect on Roosevelt's ideals and how they resonate in our world today. His calls for civic responsibility, environmental stewardship, and bold action in the face of adversity remain as relevant today as they were in his time.

I'd like to extend my gratitude to our incredible production team, to our talented actor and all who have contributed to bringing this story to life, and to you, our audience – thank you for being a part of this theatrical experience. We hope 'Bully' inspires and engages you in the same way it has inspired me.

David Ailing has been involved with the BSA since 2008, appearing both on stage and behind the scenes. Directing credits include The Best Little Whorehouse in Texas, The Lion in Winter, and his own adaptation of Shakespeare's Hamlet. David recently appeared in the BSA's presentation of A Christmas Carol as Ebenezer Scrooge, and as Biff in Death of a Salesman.

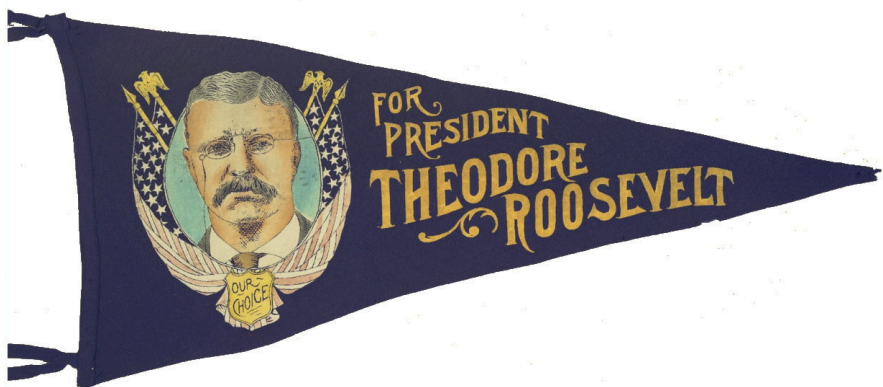
FROM THE ASSISTANT DIRECTOR



Thanks to all who have come to enjoy and support our production of *Bully: An adventure with Teddy Roosevelt*.

I have been involved with BSA productions since childhood. Now I have the honor to assistant direct alongside my husband David. I have very much enjoyed supporting his passion and vision for this production.

A few special thanks go out to our entire production team, family, and friends that helped us with watching our children when we were both working on this at the same time. And thank you to the BSA board of directors who helped make this show possible!



Synopsis

This brilliant one-man play takes its audience on "An Adventure with Teddy Roosevelt" capturing the essence of our 26th President and the man who inspired the teddy bear. Mr. Alden eloquently transports us to the world of President Roosevelt as he looks back on his life in 1900. We hear about Teddy's political beginnings and his ideas on power, corporate greed, and the need for environmental conservation. We share in conversations with his wife, sons, and daughter. Other characters that grace the stage include allies, enemies, and family friends - all portrayed through the performance of the single actor playing Teddy. Furthermore we experience Roosevelt's exploring the wilds of the West, facing war, and facing death. From building and controlling the Panama Canal to uplifting the United States to a key power in international affairs, the events of Teddy's life and presidency evoke themes of political scheming, business rights over human rights, deep love of family, and deep love of the land that still resonate in the major political debates of today.



Special
Thanks to...



Quality Care, Close To Home

for printing our
posters and playbills



SCENES

Act I

Stories on Sagamore Hill

Scene 1: The Tennis Cabinet

Scene 2: The Bear Hunt and Teddy's Bear

Scene 3: "Henry Louis Mencken! reporter, critic, muckraker..."

Scene 4: Tea with Edie; a Row on Oyster Bay

Scene 5: A Nervous, Timid Youth

Scene 6: Joe Murray and the Republican Party

Scene 7: The Death of Alice / Running West

Scene 8: In The White House

Scene 9: Taking on the Gridiron Club / Declaring for a Third Term

Act II

The Campaign / Colonel Roosevelt

Scene 1: Leaving Sagamore Hill

Scene 2: Campaign: Pittsburgh, San Francisco, New York

Scene 3: Chicago – The 1912 Republican National Convention

Scene 4: Defeat / Back at Sagamore Hill

Scene 5: A World at War

Scene 6: "My crowded hour began."

Bully - Drew Schlegel



Drew Schlegel has recently moved back to Bellevue and is currently working in Sandusky at Firelands vending. Coming back into acting after a decade plus off the stage is hard.

When I found out it was a one-man show I'd signed up for it had become a Herculean task, especially 67 pages of dialogue. The hardest part is capturing the energy of Teddy Roosevelt while still enunciating clearly to everybody in the audience. Especially the political speeches. Working with Dave was wonderful. Very patient director, very clear and concise; with a clear vision of what he expected from me. But I hope the audience can take away from this show is if you understood the history behind Teddy Roosevelt you can see the personal conflicts and struggles he dealt with. And if you didn't have an understanding of the history around Teddy Roosevelt, you now know what American politics was like in the early 20th century.



Theodore's Viewless Companions

Elihu Root-	Secretary of War
Henry Cabot Lodge-	Senator from Massachusetts
Jules Jusserand-	French Ambassador
H. L. Mencken-	Critic, <i>Baltimore Sun</i>
Edith Carow Roosevelt-	<i>Second Wife</i>
William Allen White-	<i>Publisher, Emporia Gazette</i>
Gifford Pinchot-	<i>Governor of PA, Conservationist</i>
Theodore Roosevelt, Sr.-	<i>Father</i>
Martha Bulloch Roosevelt-	<i>Mother</i>
Joe Murray-	<i>New York City Politician</i>
Alice Hathaway Lee Roosevelt-	<i>First Wife</i>
“Bink”-	<i>Quentin's Friend</i>
Quentin Roosevelt-	<i>Son</i>
Bill Loeb-	<i>Private Secretary</i>
Baron Jutarō Komura-	<i>Emissary of the Mikado</i>
Minister Kogoro Takahira-	<i>Emissary of the Mikado</i>
Mrs. Curtis-	<i>Visitor to the White House</i>
Count Serge Witte-	<i>Emissary of the Czar</i>
Kermit Roosevelt-	<i>Son</i>
Alice Roosevelt-	<i>Daughter</i>
Theodore Roosevelt III-	<i>Son</i>
Ethel Roosevelt-	<i>Daughter</i>
Archie Roosevelt-	<i>Son</i>
President Woodrow Wilson	

A word from the BSA President: Marty Siegel

Welcome to the Bellevue Society for the Arts. I would like to take a few moments to say Thank You to those who have helped support live theater. It takes many volunteers to bring a show to opening night, and I am so very proud and thankful of all the hard work from each and every one who has been involved.

The show you are about to enjoy was a labor of love given by many more than those listed in this program, we are thankful for those who have assisted in any way.

We run on revenue from ticket sales, sponsors and donations. Thank YOU for your support. It takes many hands, hours, and dollars to get to opening night.

In closing I would like to thank those currently serving on the board, those who have retired, and our many committee chairs. I truly appreciate all you do or have done for BSA. Sit back and enjoy the show.




**Spread the
news for the
BSA!!**





**WE NEED
YOUR HELP!**


WHEN YOU SEE A
POST ABOUT THE
SHOW ON SOCIAL
MEDIA YOU CAN
HELP DRIVE UP ITS
VIEWS BY DOING
THE FOLLOWING.

LOVE OR LIKE IT
COMMENT ON IT
SHARE IT
INVITE OTHERS
TO DO THE SAME

 love or like

 comment

 share

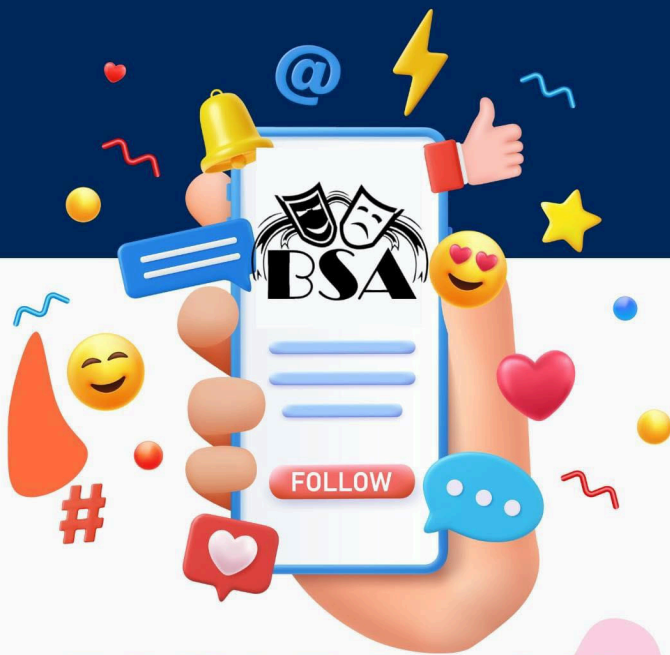
 Invite

**Special Thanks to Amsden House
for purchasing the naming rights to our
kitchen for a 10 year financial
commitment to our theater.**



**116 E. MAIN ST.
BELLEVUE, OH
419-483-5650**

**For information on how to name a portion of our
venue after your business or loved one, contact a
current BSA board member.**



JOIN BSA ON SOCIAL MEDIA STAY INFORMED



Facebook



Instagram



TikTok





ART 4 SHOW AND SALE

Over 35 local artists

pottery fiber
glass jewelry
paintings cards
woodwork
embroidery
photography
drawings



artat106.org

106 S Sandusky St, Bellevue, OH

Open Hours: Thurs & Friday 1-4pm Sat 10-2pm
or Schedule an appointment 419-483-3244



Cornerstone

COUNSELING

Bellevue Office:
817 Kilbourne St.
Bellevue, Ohio 44811
Phone: (419) 483-9411

Sandusky Office:
4444 Galloway Road
Sandusky, Ohio 44870
Phone: (419) 621-8773



Betsy's Boutique Shop

UNIQUELY DIFFERENT.



AUXTER
FUNERAL HOMES

THE PILLAR OF FUNERAL SERVICE
IN BELLEVUE & CLYDE



Proudly Supports Bellevue Society for the Arts

First National Bank

With dedication and perseverance, Bellevue Society for the Arts has worked to provide culture and entertainment to the Bellevue Area Community. First National Bank has served the financial needs of our neighbors for almost 150 years. Our Directors, Officers, and Staff applaud the accomplishments of the BSA.

We're Your Bank of a Lifetime!

*Bellevue-Catawba-Clyde-Fremont-Norwalk-
Perkins-Port Clinton-Put-in-Bay-Sandusky*



PROFESSIONAL
REALTY

BERKSHIRE
HATHAWAY
HOMESERVICES



Lyndsay Sosa

REALTOR®

101 W. Main St.
Bellevue, OH

Cell: 419.217.5440

Office: 419.483.5600

lyndsaysosa@gmail.com

www.lyndsaysosarealtor.com

License # 2015004982



A member of the franchise system of BHH Affiliates

Bellevue
FAMILY DENTISTRY



FOUR COUNTY
VETERINARY SERVICES

YOUnique Wellness Center

'The focus is always on YOU'

We offer a number of holistic wellness modalities that address the underlying imbalances or dysfunctions in the body, aiming to restore overall health and promote long-term healing. This approach can lead to a more sustainable and lasting improvement in your wellness and health outcomes. Schedule a tour today and learn more.

 **PEMF (Pulse Electro-Magnetic Frequency)**

 **Platinum LED Red Light**

 **Halotherapy (Salt Booth)**

 **Infrared Wellness POD**

 **LED and Infrared Light**

 **Reiki and Vibrational Sound**

 **Bio Wellness Energy**

 **Sound Bath**

 **Qi-Gong / Yoga**



202 West Main Street | Bellevue, Ohio

(567) 214-4404

www.YOUniqueWellnessCenter.com

Haven Hypnosis & Wellness

HELPING CLIENTS WITH:

Stress Management Confidence Building

Pain Management Smoking Cessation

Weight Management

Managing
Autoimmune
Disorders

COMPLEMENTARY
CARE SERVICES FOR
CLIENTS ONLINE & IN-OFFICE:

Hypnosis

Reiki

Clergical Care

Meditation

Personal & Professional Development

Accountability Coaching

for more information find us online or call:

havenhypnosisandwellness.com | 419-577-8484



Wes Miller

Financial Advisor

1355 West Main Street Suite C
Bellevue, OH 44811
419-483-1583



Jeffrey M Thomas

Financial Advisor

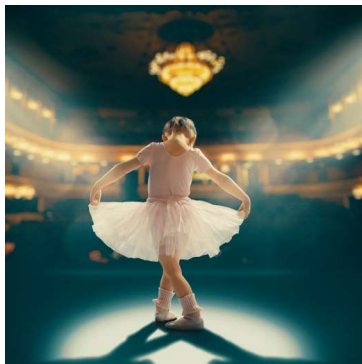
1355 West Main Street Suite C
Bellevue, OH 44811
419-483-1583

Edward Jones

> edwardjones.com | Member SIPC

**Be seen.
Be heard.
Be proud.**

Thank you for helping us be
part of this great community.
We're glad to be here.



PERRY'S PLANTATION, INC.

perrysplantation.com



1400 Seneca Industrial Parkway
(Route 20 West)

Bellevue, Ohio 44811

419-483-2054

419-483-5264 Fax

perrysplantation@frontier.com

GARDEN CENTER * NURSERY * LANDSCAPE

A graphic of a DJ booth with a black background and rounded corners. The text 'Coops Entertainment' is written in a light blue, sans-serif font at the top center. Below it is a white audio waveform. Underneath the waveform are three buttons labeled 'COUNTRY', 'ROCK', and 'TOP 40'. At the bottom, the phone number '419-271-4098' is displayed in light blue, followed by the email 'mnickcooper@yahoo.com' and a Facebook icon with the text 'coopsentertainmentDJ'. On either side of the central text are silver knobs labeled 'GAIN' and 'CUE', and a vertical stack of horizontal lines representing a mixer's faders.

GAIN

Coops Entertainment

CUE

COUNTRY ROCK TOP 40

419-271-4098

mnickcooper@yahoo.com

[f coopsentertainmentDJ](https://www.facebook.com/coopsentertainmentDJ)

GAIN

Foos
& Foos
Funeral Homes



**ERIE COUNTY
COMMUNITY
FOUNDATION**



MISSION

To enrich the lives of the people of Erie County by addressing community needs, providing leadership, and cultivating resources for a lasting impact.

VISION

A vibrant and empowered Erie County, whose residents thrive and where the community flourishes.

HURON COUNTY

COMMUNITY FOUNDATION



The Huron County Community Foundation is a 501(c)(3) non-profit dedicated to enhancing the quality of life of the people of Huron County. In 1997, It was established as an affiliate fund of the Community Foundation of Lorain County and in 2021 became its own community foundation.

The mission of the Huron County Community Foundation is to improve the quality of life in Huron County, now and for generations to come, through charitable giving and connecting donors to community needs.



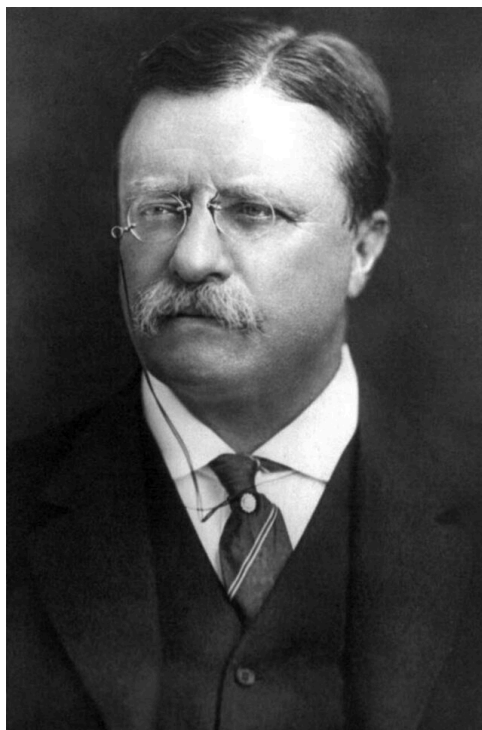
**523 N. Sandusky Street
Bellevue Ohio 44811
419-483-4965**

Find us on Google and Facebook!
We are accepting new clients!



H.B. Fuller

Dedicated to producing high-performance
adhesives and sealants for the solar market.



Theodore Roosevelt

Theodore Roosevelt
26th President
United States of America



Sing and Play the Music Way

Music Together, Vocal, Piano and Acting Services

- ★ **Piano Lessons**
- ★ **Voice Lessons**
- ★ **Acting Lessons**

Contact
Christine Turner
419-217-9105

singandplaythemusicway@gmail.com



Sew Crazy!

Creative Sewing Solutions

**Professional Long Arm Machine
Quilting**

**T-shirt & Memory Quilts, Bears &
Pillows**

Theatre and Halloween Costumes

**Clothing Construction,
Alterations and Repairs**

**Professional Machine Embroidery
Services**

Slipcovers, Cushions and Pillows

Elaine Gittinger

By Appointment Only, Green Springs, Ohio

elaine.gittinger@yahoo.com

FB - Sew Crazy by Elaine

Cell - (419) 217-3386



Call 800-276-5775



Click Firelandscfu.org



Stop By 300 North St., Bellevue



Have a great season!



croghan.com
888-276-4426

BELLEVUE

One Union Square
Bellevue, OH 44811
419-483-2541

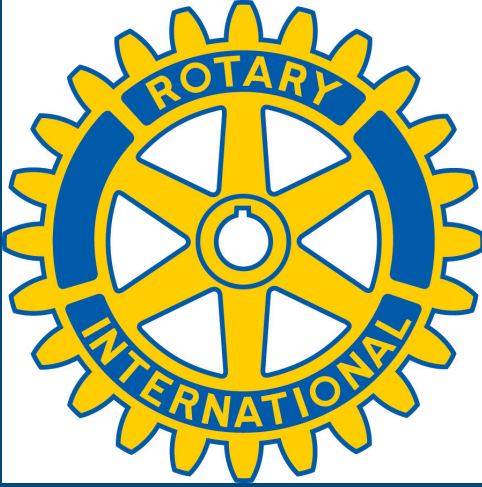
BUILDING A CLOSER COMMUNITY

CROGHAN
COLONIAL BANK



EQUAL HOUSING LENDER • MEMBER FDIC

ONE PERFORMANCE AT A TIME



OF BELLEVUE,
OHIO





Present their
2024-25
theatre season

CABARET

February 14, 15, 22, 23, 2025

HARMONY ROMANCES

May 2, 3, 4, 9, 10, 2025

ANASTASIA

July 11, 12, 19, 20, 2025



FREMONT COMMUNITY THEATRE

KINKY BOOTS

Sept 27, 28, 29, Oct 4, 5, 6, 2024

Directed by Mike Steyer

25th ANNUAL PUTNAM COUNTY

SPELLING BEE

Dec 6, 7, 8, 13, 14, 15, 2024

Directed by Bradley Rowe

SILENT SKY

Jan 24, 25, 26, 31, Feb 1, 2, 2025

Directed by Michael PJ Foos

5 LESBIANS EATING A QUICHE

Mar 14, 15, 16, 21, 22, 23, 2025

Directed by TJ McKee

CHARLIE & THE CHOCOLATE FACTORY

May 9, 10, 11, 16, 17, 18, 2025

Directed by Briann Edwards

Teen

The Music Man

July 12, 13, 14, 2024

Directed by Sarah Stamm

Youth

Aladdin Jr.

Aug 2, 3, 4, 2024

Directed by Floyd Collins

CONGRATULATIONS



A huge congratulations to our very own, Marty Siegel, for the well-deserved honor of being named the Bellevue Area Chamber of Commerce 2024 Hometown Hero.



SUPPORT BSA



★ Playbill Ad ★

Seen by thousands of patrons in the season!

By aligning your name with high-quality theatrical productions, you will demonstrate your commitment to the arts and community involvement.

Full page 7" X 4 ½" \$500

Half page 3 ½" X 4 ½" \$300

Quarter page 3 ½" X 2 ¼" \$175

Eighth page 1 ¾" X 2 ⅛" \$100

Ad copy and or company logo for full season playbill needs submitted by July 10, 2024.

After this date we will fit your ad in when possible.

If you do not have a logo, a generic logo can be created for you, upon request.

Contact:

President, Marty Siegel
Bellevue Society for the Arts
martyot@hotmail.com
(419) 271-3926

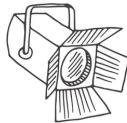
205 Maple St., Bellevue, Ohio 44811.

BSA is a non-profit, 501(c)(3) charitable organization

SUPPORT BSA



★ Sponsorship Levels ★



Supporting

1/4 page in sponsored production playbill. Seen by thousands of patrons.

Two complimentary tickets to the sponsored production.

Name recognition in lobby/banquet room.

\$750

Featured

1/2 page ad in sponsored production playbill. Seen by thousands of patrons.

Four comp tickets to the sponsored production.

Mention in associated press release, announcement and media engagements for the sponsored production.

Name recognition in lobby/banquet room.

\$2,000

Center Stage

Two Season tickets.

Full page ad in all playbills. Seen by thousands of patrons.

Name and logo in all press releases, posters, flyers and social media.

Recognition at nightly curtain speech during all sponsored show performances.

Invite to VIP events.

Name and Logo recognition in lobby/banquet room.

\$3,000

Contact:

President, Marty Siegel
Bellevue Society for the Arts
martyot@hotmail.com
(419) 271-3926

205 Maple St., Bellevue, Ohio 44811.

BSA is a non-profit, 501(c)(3) charitable organization



Name _____ Date _____

Address _____ Apt # _____

City _____ State _____ ZIP _____

Phone _____ Email _____

MEMBERSHIP LEVEL REQUESTED

(Please check one and include payment for appropriate amount):

- \$20 Bronze Annual**
Includes one free ticket valid for one year
- \$30 Silver Annual**
Includes one free ticket and three \$1 off per ticket coupons, valid for one year
- \$50 Gold Annual**
Includes two free tickets and five \$1 off per ticket coupons, valid for one year
- \$200 Platinum Lifetime**
Includes \$2 off one ticket per show, two free tickets for show of your choice per season (not including Holiday Innkeeper Cabarets, special events, etc.), valid for life

Please make checks payable to **BELLEVUE SOCIETY FOR THE ARTS**
Mail application, along with payment, to **PO Box 493, Bellevue, OH 44811**

If you have any questions or concerns, please feel free to contact the Membership Committee





2024 - 2025

OUR 29TH SEASON

Once Upon A Mattress

September
21, 22 & 28, 29 2024

BSA

A BIG SPOOKY AFFAIR

October
19 & 26 2024

Disney BEAUTY AND THE BEAST
THE BROADWAY MUSICAL

December
13, 14, 15 & 20, 21, 22 2024

Ken Ludwig's

Moon Over Buffalo

Jan. - Feb.
Jan. 31 - Feb 1, 2 & 7, 8 2025

Disney Alice in Wonderland JR

March
21, 22, 23 & 28, 29, 30 2025

BULLY

April
4, 5 & 6 2025
An Adventure with Teddy Roosevelt

THE COMPLETE WORKS OF WILLIAM SHAKESPEARE

(ABRIDGED) (REVISED) (ACORN)

COMEDY GOLD

May
9, 10, 11 & 16, 17 2025

"WILDLY FUNNY. MASTERFUL!"
The Los Angeles Times

BRING IT ON

July
11, 12, 13 & 18, 19 2025

THE HIRT THEATER - 205 Maple St., Bellevue, OH 44811

WWW.BELLEVUEARTS.NET