



2024-25: OUR 29TH SEASON



# PLAYBILL



THE HIRT THEATER



Ken Ludwig's

# Moon

# Over

# Buffalo



*PRESENTED THROUGH SPECIAL ARRANGEMENT WITH CONCORD THEATRICALS*

*SPONSORED BY WILHELM ACCOUNTING SERVICES*

Playbill Author - Tricia McElfresh



bellevuearts.net

MARTY SIEGEL *President*

DERIC MARBAUGH *Vice President*

KEITH ROBINSON *Treasurer*

SHARON MUSSER *Secretary*

— TRUSTEES —

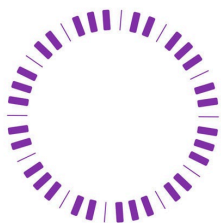
Sheri Ammanniti Leslie Shanaman Floyd Collins Doug Franks Juliet Russell

JIMY FOREMAN *Artistic Director*

# MOON OVER BUFFALO

## By Ken Ludwig

### DIRECTED BY CHRIS BILECKI



**CONCORD**  
THEATRICALS

Presented through special arrangement with  
Concord Theatricals

THE VIDEOTAPING OR MAKING OF ELECTRONIC OR OTHER AUDIO AND/OR VISUAL RECORDINGS OF THIS PRODUCTION AND DISTRIBUTING RECORDINGS OR STREAMS IN ANY MEDIUM, INCLUDING THE INTERNET, IS STRICTLY PROHIBITED, A VIOLATION OF THE AUTHOR(S)'S RIGHTS, AND ACTIONABLE UNDER UNITED STATES COPYRIGHT LAW. FOR MORE INFORMATION, PLEASE VISIT:

<https://concordtheatricals.com/resources/protectingartists>



# PRODUCTION TEAM

---

Director – Chris Bilecki

Stage Manager – Cathy Schaffer

Stage Crew – Jacob Mildner

Lighting Design – Adam Shanaman

Light Operator – Nathan Shanaman

Sound Operator – Will Mitchell

Spot Operators – Brian Boies and  
Julie Boies

Costuming – Sheri Ammanniti

Hair Styling - Mary Ailing

Board Liaison – Leslie Shanaman

Prop Master – Chris Bilecki

Set Design – Chris Bilecki

Set Construction – Doug Franks, Brian  
Boies and Chris Bilecki

# Special Thanks

---

We would like to thank George Sherwood and Gary King for their generous prop donations!



The Mylander  
Foundation

Thank you for the upgraded lighting.

---



Thank you to Sandusky County  
Communities Foundation for  
grant to pay for security  
cameras.

# FROM THE DIRECTOR



Moon Over Buffalo is a show that has held a special place in my heart ever since I had the pleasure of performing it in the role of Paul. It was 2011 and I was living in a tiny town called Athens, Texas. I had moved there for my job and without any family or friends, it was hard to feel at home. And then I stumbled upon this amazing community theatre called the Henderson County Performing Arts Center (HCPAC).

I grew up doing theatre but it had been quite some time since I had been involved so I decided to give it a shot again. I went to an audition as a complete stranger. But after being cast, I quickly found the home that I had been looking for. I was only in Texas for a couple of years but the shows I did at HCPAC are the highlight of my time there. And a huge part of those good memories is a man named Dennis Gilmore. Dennis was the Executive Director of the Henderson County Performing Arts Center and he was also my director for Moon Over Buffalo. Dennis was a tireless advocate for community theatre and was the Executive Director of HCPAC from 1989 up until 2014 and was also heavily involved in various roles on a national level with the AACT. He was always encouraging and welcoming to me and he gave me a family and a home when I needed it the most. Sadly, Dennis passed away in 2021. He leaves behind a tremendous legacy and a hole in all of the people's lives he touched. This show is dedicated to the memory of Dennis Gilmore, from half a country away.

I hope you all enjoy this show as much as we have enjoyed putting it together for you! In our fast paced and often stressful world, it is not often that we get a chance to just unplug from everything for a little while and laugh together. Now is that chance!

It is such an honor to be directing my first show here at the BSA, another theatre that has quickly become a second home to me. This is truly a wonderful place full of so many extraordinarily talented and dedicated people. Community theatre is alive and well and that is clearly evident at the BSA!

Sit back, relax, let loose and above all: enjoy the show!

Chris Bilecki

# Synopsis

---

In the madcap comedy tradition of *Lend Me a Tenor*, the hilarious *Moon Over Buffalo* centers on George and Charlotte Hay, fading stars of the 1950s. At the moment, they're playing *Private Lives* and *Cyrano De Bergerac* in rep in Buffalo, New York with five actors. On the brink of a disastrous split-up caused by George's dalliance with a young ingénue, they receive word that they might just have one last shot at stardom: Frank Capra is coming to town to see their matinee, and if he likes what he sees, he might cast them in his movie remake of *The Scarlet Pimpernel*.

Unfortunately for George and Charlotte, everything that could go wrong does go wrong, abetted by a visit from their daughter's clueless fiancé and hilarious uncertainty about which play they're actually performing, caused by Charlotte's deaf, old stage-manager mother who hates every bone in George's body.



Special  
Thanks to...



---

*Quality Care, Close To Home*

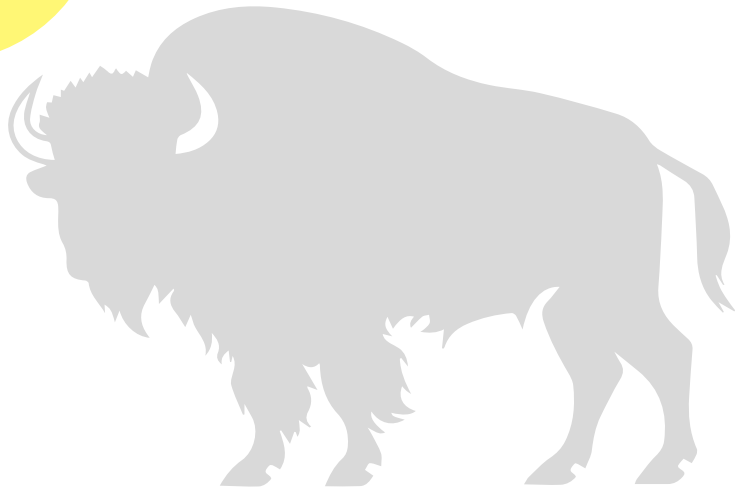
for printing our  
posters and playbills



# Moon Over Buffalo Cast

---

George Hay.....	Samuel Hohman
Charlotte Hay.....	Tricia McElfresh
Ethel.....	Janet Wittenmyer
Rosalind.....	Leslie Shanaman
Howard .....	Jared Bradley
Eileen .....	Ivy McElfresh
Paul .....	Adam Shanaman
Richard .....	Doug Franks
Soldier 1.....	Julie Boies
Soldier 2 .....	Tori Boies
Soldier 3.....	Brian Boies





## A word from the BSA President: Marty Siegel

Welcome to the Bellevue Society for the Arts. I would like to take a few moments to say Thank You to those who have helped support live theater. It takes many volunteers to bring a show to opening night, and I am so very proud and thankful of all the hard work from each and every one who has been involved.

The show you are about to enjoy was a labor of love given by many more than those listed in this program, we are thankful for those who have assisted in any way.

We run on revenue from ticket sales, sponsors and donations. Thank YOU for your support. It takes many hands, hours, and dollars to get to opening night.

In closing I would like to thank those currently serving on the board, those who have retired, and our many committee chairs. I truly appreciate all you do or have done for BSA. Sit back and enjoy the show.




**Spread the  
news for the  
BSA!!**





**WE NEED  
YOUR HELP!**


WHEN YOU SEE A  
POST ABOUT THE  
SHOW ON SOCIAL  
MEDIA YOU CAN  
HELP DRIVE UP ITS  
VIEWS BY DOING  
THE FOLLOWING.

LOVE OR LIKE IT  
COMMENT ON IT  
SHARE IT  
INVITE OTHERS  
TO DO THE SAME

 love or like

 comment

 share

 Invite

**Special Thanks to Amsden House  
for purchasing the naming rights to our  
kitchen for a 10 year financial  
commitment to our theater.**



**116 E. MAIN ST.  
BELLEVUE, OH  
419-483-5650**

**For information on how to name a portion of our  
venue after your business or loved one, contact a  
current BSA board member.**

# **SCENES**

---

## **SETTING**

**On stage and Backstage at the Erlanger  
Theatre.**

## **TIME**

**Buffalo, New York, 1953.**

## **Act I**

**A mid-morning in June**

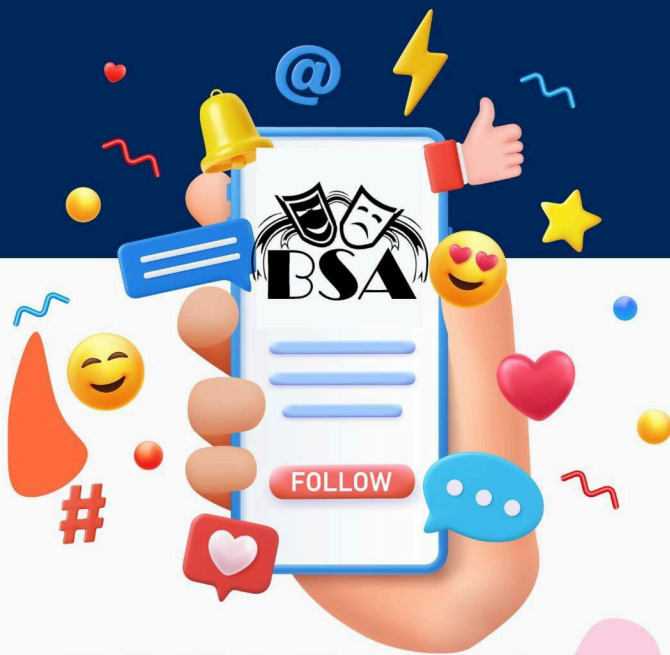
**~INTERMISSION~**

## **Act II**

**Scene One: Two hours later**

**Scene Two: Immediately following**

**Scene Three: Two hours later**



# JOIN BSA ON SOCIAL MEDIA STAY INFORMED



Facebook



Instagram



TikTok





## ART 4 SHOW AND SALE

**Over 35 local artists**

pottery      fiber  
glass      jewelry  
paintings      cards  
woodwork  
embroidery  
photography  
drawings



**artat106.org**

106 S Sandusky St, Bellevue, OH

Open Hours: Thurs & Friday 1-4pm Sat 10-2pm  
or Schedule an appointment 419-483-3244



# Cornerstone

## COUNSELING

**Bellevue Office:**  
817 Kilbourne St.  
Bellevue, Ohio 44811  
Phone: (419) 483-9411

**Sandusky Office:**  
4444 Galloway Road  
Sandusky, Ohio 44870  
Phone: (419) 621-8773

---



*Betsy's Boutique Shop*

UNIQUELY DIFFERENT.

---



**AUXTER**  
FUNERAL HOMES

THE PILLAR OF FUNERAL SERVICE  
IN BELLEVUE & CLYDE



## Proudly Supports Bellevue Society for the Arts

### *First National Bank*

With dedication and perseverance, Bellevue Society for the Arts has worked to provide culture and entertainment to the Bellevue Area Community. First National Bank has served the financial needs of our neighbors for almost 150 years. Our Directors, Officers, and Staff applaud the accomplishments of the BSA.

### **We're Your Bank of a Lifetime!**

*Bellevue-Catawba-Clyde-Fremont-Norwalk-  
Perkins-Port Clinton-Put-in-Bay-Sandusky*



PROFESSIONAL  
REALTY

BERKSHIRE  
HATHAWAY  
HOMESERVICES



Lyndsay Sosa

REALTOR®

101 W. Main St.  
Bellevue, OH

Cell: 419.217.5440

Office: 419.483.5600

lyndsaysosa@gmail.com

www.lyndsaysosarealtor.com

License # 2015004982



A member of the franchise system of BHH Affiliates

*Bellevue*  
FAMILY DENTISTRY



**FOUR COUNTY**  
VETERINARY SERVICES

# YOUnique Wellness Center

*'The focus is always on YOU'*

We offer a number of holistic wellness modalities that address the underlying imbalances or dysfunctions in the body, aiming to restore overall health and promote long-term healing. This approach can lead to a more sustainable and lasting improvement in your wellness and health outcomes. Schedule a tour today and learn more.

 **PEMF (Pulse Electro-Magnetic Frequency)**

 **Platinum LED Red Light**

 **Halotherapy (Salt Booth)**

 **Infrared Wellness POD**

 **LED and Infrared Light**

 **Reiki and Vibrational Sound**

 **Bio Wellness Energy**

 **Sound Bath**

 **Qi-Gong / Yoga**



**202 West Main Street | Bellevue, Ohio**

**(567) 214-4404**

**[www.YOUniqueWellnessCenter.com](http://www.YOUniqueWellnessCenter.com)**





Brian Boies



Julie Boies



Tori Boies



Jared Bradley



Doug Franks



Samuel Hohman



Ivy McElfresh



Tricia McElfresh



Adam Shanaman



Leslie Shanaman



Janet Wittenmyer

# Haven Hypnosis & Wellness

HELPING CLIENTS WITH:

Stress Management      Confidence Building

Pain Management      Smoking Cessation

Weight Management

Managing  
Autoimmune  
Disorders

COMPLEMENTARY  
CARE SERVICES FOR  
CLIENTS ONLINE & IN-OFFICE:

Hypnosis

Reiki

Clergical Care

Meditation

Personal & Professional Development

Accountability Coaching

for more information find us online or call:

[havenhypnosisandwellness.com](http://havenhypnosisandwellness.com) | 419-577-8484



## Wes Miller

Financial Advisor

1355 West Main Street Suite C  
Bellevue, OH 44811  
419-483-1583



## Jeffrey M Thomas

Financial Advisor

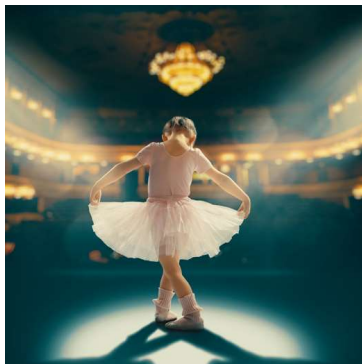
1355 West Main Street Suite C  
Bellevue, OH 44811  
419-483-1583

# Edward Jones®

> [edwardjones.com](http://edwardjones.com) | Member SIPC

**Be seen.  
Be heard.  
Be proud.**

Thank you for helping us be  
part of this great community.  
We're glad to be here.



# PERRY'S PLANTATION, INC.

perrysplantation.com



1400 Seneca Industrial Parkway  
(Route 20 West)

Bellevue, Ohio 44811

419-483-2054

419-483-5264 Fax

[perrysplantation@frontier.com](mailto:perrysplantation@frontier.com)

GARDEN CENTER \* NURSERY \* LANDSCAPE

A graphic of a DJ booth with a black background and rounded corners. The text 'Coops Entertainment' is at the top in blue. Below it is a white audio waveform. Three buttons labeled 'COUNTRY', 'ROCK', and 'TOP 40' are in the center. The phone number '419-271-4098' is in blue. Below the number are the email 'mnickcooper@yahoo.com' and a Facebook icon with the text 'coopsentertainmentDJ'. On either side of the central area are silver knobs labeled 'GAIN' and 'CUE', and vertical sliders.

Foos  
& Foos  
Funeral Homes



**ERIE COUNTY  
COMMUNITY  
FOUNDATION**



## **MISSION**

**To enrich the lives of the people of Erie County by addressing community needs, providing leadership, and cultivating resources for a lasting impact.**

## **VISION**

**A vibrant and empowered Erie County, whose residents thrive and where the community flourishes.**

**HURON COUNTY**  
COMMUNITY FOUNDATION



**The Huron County Community Foundation is a 501(c)(3) non-profit dedicated to enhancing the quality of life of the people of Huron County. In 1997, It was established as an affiliate fund of the Community Foundation of Lorain County and in 2021 became its own community foundation.**

**The mission of the Huron County Community Foundation is to improve the quality of life in Huron County, now and for generations to come, through charitable giving and connecting donors to community needs.**



**523 N. Sandusky Street  
Bellevue Ohio 44811  
419-483-4965**

Find us on Google and Facebook!  
We are accepting new clients!



**H.B. Fuller**

Dedicated to producing high-performance  
adhesives and sealants for the solar market.

## Meet our Cast & Crew

---

**Brian Boies** (Soldier) lives in Bellevue with his wife Tori and their nephews Jay and Trysten. Brian works as a diesel mechanic at Heidelberg Materials. Brian has been behind the scenes as a stage hand and worked lights for several shows, and this is his first time on stage.

**Julie Boies** (Soldier) lives in Bellevue with her kitty, Adidas, and works at the Bellevue Goodwill Store. This is her second show at BSA, after being in the ensemble for *Once Upon a Mattress*. Julie looks forward to doing more shows in the future.

**Tori Boies** (Soldier) lives in Bellevue with her husband Brian and their nephews Jay and Trysten, and works at the Bellevue Goodwill Store. This is her second show at BSA, after being in the ensemble for *Once Upon a Mattress*. "I love watching all the shows come together!".

**Jared Bradley** (Howard) is the son of David and Cindy Bradley of Bellevue, and works for the United States Postal Service. You may have seen him on this stage as Cogsworth in *Beauty and the Beast*, Chris in *Hands on a Hardbody*, or in *42nd Street* at FCT, *Twelfth Night* with the Birchard Players, or in *The Secret Garden*, *Mousetrap*, and *The Pirates of Penzance*, at BSA, not to mention many more!

**Doug Franks** (Richard) lives with his theatre-active family in Marblehead. He's appeared on stage in FCT's *Elf*, *The Wizard of Oz*, and *The Play that Goes Wrong*, among others. At BSA, you may have seen him as JD in *Hands on a Hardbody*, or in *The Sound of Music*. He was the stage manager for *Beauty and the Beast*, and loves to create magic on stage through his imaginative set building,

# Meet our Cast & Crew

**Samuel Hohman** (George Hay) comes from a theatre-loving family, all who have been connected to BSA and other places for quite some time. Sam and his wife of 30 years, Nicole, live in Sandusky with their daughters Laura and Chelsea. Sam has performed at BSA in *Hello, Dolly!* as Cornelius, in *Little Shop of Horrors* as Orin Scrivello, DDS, and in *Funny Girl* as Nick Arnstein. He directed *The Sound of Music* in 2022. Sam has been the assistant director of the High School play at Danbury High School in Lakeside-Marblehead for 3 years, and was the music director for 2 years for the Perkins HS spring musical. He has also performed and assistant directed at Harlequins Coach House Theatre in Sandusky. Sam would like to thank his family for being so gracious and supportive in allowing him to take the many hours of time to step into this role!

**Ivy McElfresh** (Eileen) lives with her family in Clyde and works as a Barista at Dunkin'. She has appeared in over 50 productions. Some of her favorite roles include Belle in *Disney's Beauty and the Beast*, Dorothy in *The Wizard of Oz*, Phyllis Dale in *42nd Street*, Macy's Elf in *Elf The Musical* at FCT, as well as Kelli in *Hands on a Hardbody*, Ayah in *The Secret Garden*, Sally in *A Charlie Brown Christmas*, and Charlotte in *A Christmas Carol*.

**Tricia McElfresh** (Charlotte Hay) is an English Teacher at Vanguard-Sentinel Career and Technology Center and the Youth Minister at Hayes Memorial UMC. She is the Camp Administrator for FCT's Summer Youth Camp and has been on FCT's stage as Patty in *A Charlie Brown Christmas* and Auntie Em in *The Wizard of Oz*. As a member of BSA, she played Virginia in *Hands on a Hardbody*, and was the assistant director for *Beauty and the Beast*. She lives in Clyde with her family, enjoys camping and spending time doing amazing shows with great people.



# Meet Our Cast & Crew

**Adam Shanaman** (Paul) has been involved in over 30 productions as a performer, director, assistant director, stage manager, stage crew, and light and sound designer/operator. Some of his favorite roles he has performed on stage include Pharaoh in *Joseph and the Amazing Technicolor Dreamcoat* (FCT) the Sergeant in *Pirates of Penzance* (BSA) Captain Von Trapp in *Sound of Music* (BSA) and Mortimer Mortimer in *Failure: A Love Story* (Bluffton University). Adam is excited to share the stage with his wife for the first time as a couple.

**Leslie Shanaman** (Rosalind) lives with her husband, Adam in Bellevue and teaches 3rd grade at Bellevue Elementary School. She has been involved in well over 50 productions, has served as the director of BSA's Teen Theatre program since 2019, and assistant directed for years before that. Some of Leslie's favorite onstage roles include Ariel in *The Little Mermaid* (FCT), Heather Stovall in *Hands on a Hardbody* (BSA), Glinda the Good Witch in *The Wizard of Oz* (FCT), and most recently, Mrs. Potts in *Disney's Beauty and the Beast* here at BSA.

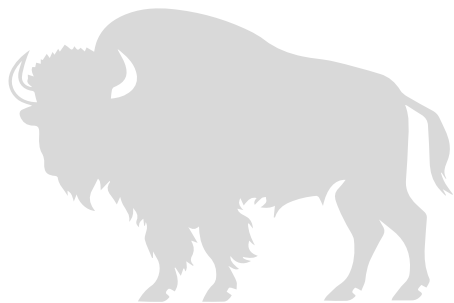
**Janet Wittenmyer** (Ethel) is thrilled at being cast in *Moon Over Buffalo*. A veteran on the stage, this is her fourth show in Bellevue. Janet has been in too many shows to name over many years in Chicago and Northwest Ohio. Most recently she played Peggy in *Godspell* in Norwalk, and Imogene Fletcher in *Four Old Broads* in Port Clinton. In her real life Janet has been a Lutheran pastor for 40 years. She is currently the pastor at Trinity Lutheran church in Willard. She has two adult sons who live in Chicago, and a Collie named Molly.

# Meet Our Cast & Crew

## Behind the Scenes

**Sheri Ammanniti** (Costume Manager) works as a nurse and lives in Bellevue with her husband, Mike. She's a mom to 3 and a grandma to 1. She has served many years on the BSA Board, and has costumed more shows than she could count. She is a jack-of-all-trades, having started on stage, been an assistant director and managed the ticket booth. She works tirelessly to bring Directors' visions to life on stage. She brought the enchanting characters to life for *Beauty and the Beast*.

**Chris Bilecki** (Director) first took the stage at the age of 10 and has since been involved in too many shows to keep track of. His most recent roles include Willy Loman in *Death of a Salesman* at BSA, Dr. Sanderson in *Harvey* at The Ritz and Detective Sergeant Trotter in *The Mousetrap* at BSA. While Chris has had a chance to wear many different hats in the theatre, both on stage and behind the scenes, *Moon Over Buffalo* is his first time in the director's chair and he couldn't be more thrilled to be doing it here at the BSA! He has had an absolute blast directing this incredible cast and he can't wait to do it again later this year when he directs *The Foreigner* as the opener for BSA's 30th season!



**Cathy Schaffer** (Stage Manager) lives in Norwalk with her husband Tony and is employed by Civista Bank. Cathy has been the stage manager for multiple adult and children's productions. Most recently, she was the Assistant Stage Manager for BSA's *Beauty and the Beast*.



## Sing and Play the Music Way

Music Together, Vocal, Piano and Acting Services

- ★ Piano Lessons
- ★ Voice Lessons
- ★ Acting Lessons

Contact  
Christine Turner  
419-217-9105

[singandplaythemusicway@gmail.com](mailto:singandplaythemusicway@gmail.com)



# *Sew Crazy!*

## *Creative Sewing Solutions*

**Professional Long Arm Machine  
Quilting**

**T-shirt & Memory Quilts, Bears &  
Pillows**

**Theatre and Halloween Costumes**

**Clothing Construction,  
Alterations and Repairs**

**Professional Machine Embroidery  
Services**

**Slipcovers, Cushions and Pillows**

***Elaine Gittinger***

By Appointment Only, Green Springs, Ohio

[elaine.gittinger@yahoo.com](mailto:elaine.gittinger@yahoo.com)

FB - Sew Crazy by Elaine

Cell - (419) 217-3386



Call 800-276-5775



Click [Firelandscfu.org](http://Firelandscfu.org)



Stop By 300 North St., Bellevue



Have a great season!



[croghan.com](http://croghan.com)  
888-276-4426

**BELLEVUE**

One Union Square  
Bellevue, OH 44811  
419-483-2541

BUILDING A CLOSER COMMUNITY

**CROGHAN  
COLONIAL BANK**



EQUAL HOUSING LENDER • MEMBER FDIC

ONE PERFORMANCE AT A TIME



OF BELLEVUE,  
OHIO





Present their  
2024-25  
theatre season

CABARET

February 14, 15, 22, 23, 2025

HARMONY ROMANCES

May 2, 3, 4, 9, 10, 2025

ANASTASIA

July 11, 12, 19, 20, 2025



# FREMONT COMMUNITY THEATRE

## **KINKY BOOTS**

Sept 27, 28, 29, Oct 4, 5, 6, 2024

Directed by Mike Steyer

## **25th ANNUAL PUTNAM COUNTY SPELLING BEE**

Dec 6, 7, 8, 13, 14, 15, 2024

Directed by Bradley Rowe

## **SILENT SKY**

Jan 24, 25, 26, 31, Feb 1, 2, 2025

Directed by Michael PJ Foos

## **5 LESBIANS EATING A QUICHE**

Mar 14, 15, 16, 21, 22, 23, 2025

Directed by TJ McKee

## **CHARLIE & THE CHOCOLATE FACTORY**

May 9, 10, 11, 16, 17, 18, 2025

Directed by Briann Edwards

### Teen

**The Music Man**

July 12, 13, 14, 2024

Directed by Sarah Stamm

### Youth

**Aladdin Jr.**

Aug 2, 3, 4, 2024

Directed by Floyd Collins



# CONGRATULATIONS



A huge congratulations to our very own, Marty Siegel, for the well-deserved honor of being named the Bellevue Area Chamber of Commerce 2024 Hometown Hero.



# SUPPORT BSA



## ★ Playbill Ad ★

**Seen by thousands of patrons in the season!**

By aligning your name with high-quality theatrical productions, you will demonstrate your commitment to the arts and community involvement.

**Full page 7" X 4 ½" \$500**

**Half page 3 ½" X 4 ½" \$300**

**Quarter page 3 ½" X 2 ¼" \$175**

**Eighth page 1 ¾" X 2 ⅛" \$100**

Ad copy and or company logo for full season playbill needs submitted by July 10, 2024.

After this date we will fit your ad in when possible.

If you do not have a logo, a generic logo can be created for you, upon request.

### **Contact:**

President, Marty Siegel  
Bellevue Society for the Arts  
martyot@hotmail.com  
(419) 271-3926

205 Maple St., Bellevue, Ohio 44811.

BSA is a non-profit, 501(c)(3) charitable organization

# SUPPORT BSA



## ★ Sponsorship Levels ★



### Supporting

1/4 page in sponsored production playbill. Seen by thousands of patrons.

Two complimentary tickets to the sponsored production.

Name recognition in lobby/banquet room.

**\$750**



### Featured

1/2 page ad in sponsored production playbill. Seen by thousands of patrons.

Four comp tickets to the sponsored production.

Mention in associated press release, announcement and media engagements for the sponsored production.

Name recognition in lobby/banquet room.

**\$2,000**

### Center Stage

Two Season tickets.

Full page ad in all playbills. Seen by thousands of patrons.

Name and logo in all press releases, posters, flyers and social media.

Recognition at nightly curtain speech during all sponsored show performances.

Invite to VIP events.

Name and Logo recognition in lobby/banquet room.

**\$3,000**

### Contact:

President, Marty Siegel  
Bellevue Society for the Arts  
martyot@hotmail.com  
(419) 271-3926

205 Maple St., Bellevue, Ohio 44811.

BSA is a non-profit, 501(c)(3) charitable organization



Name \_\_\_\_\_ Date \_\_\_\_\_

Address \_\_\_\_\_ Apt # \_\_\_\_\_

City \_\_\_\_\_ State \_\_\_\_\_ ZIP \_\_\_\_\_

Phone \_\_\_\_\_ Email \_\_\_\_\_

**MEMBERSHIP LEVEL REQUESTED**

*(Please check one and include payment for appropriate amount):*

- \$20 Bronze Annual**  
*Includes one free ticket valid for one year*
- \$30 Silver Annual**  
*Includes one free ticket and three \$1 off per ticket coupons, valid for one year*
- \$50 Gold Annual**  
*Includes two free tickets and five \$1 off per ticket coupons, valid for one year*
- \$200 Platinum Lifetime**  
*Includes \$2 off one ticket per show, two free tickets for show of your choice per season (not including Holiday Innkeeper Cabarets, special events, etc.), valid for life*

Please make checks payable to **BELLEVUE SOCIETY FOR THE ARTS**  
Mail application, along with payment, to **PO Box 493, Bellevue, OH 44811**

If you have any questions or concerns, please feel free to contact the Membership Committee





# 2024 - 2025

OUR 29TH SEASON

**Once Upon A Mattress**

**September**  
21, 22 & 28, 29 2024

**BSA**

**A BIG SPOOKY AFFAIR**

**October**  
19 & 26 2024

**Disney BEAUTY AND THE BEAST**  
THE BROADWAY MUSICAL

**December**  
13, 14, 15 & 20, 21, 22 2024

Ken Ludwig's

**Moon Over Buffalo**

**Jan. - Feb.**  
Jan. 31 - Feb 1, 2 & 7, 8 2025

**Disney Alice in Wonderland JR**

**March**  
21, 22, 23 & 28, 29, 30 2025

**BULLY**

**April**  
4, 5 & 6 2025  
An Adventure with Teddy Roosevelt

**THE COMPLETE WORKS OF WILLIAM SHAKESPEARE**

(ABRIDGED) (REVISED) (ACORN)

COMEDY GOLD

"WILDLY FUNNY. MASTERFUL!"  
The Los Angeles Times

**May**  
9, 10, 11 & 16, 17 2025

**BRING IT ON**

**July**  
11, 12, 13 & 18, 19 2025

THE HIRT THEATER - 205 Maple St., Bellevue, OH 44811

WWW.BELLEVUEARTS.NET