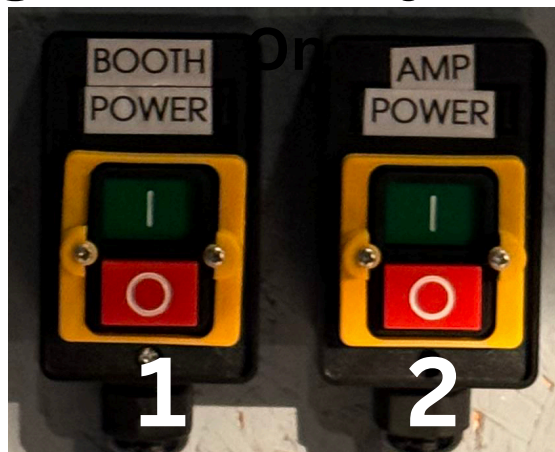


# Lighting and Sound System Power

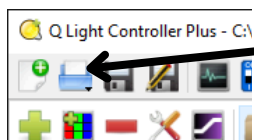


**Power on the booth switch #1 count to 10 and then the Amp power #2.**

*You can STOP here if you only want the audio board up.*

**Next wake up the lighting computer by pressing the spacebar on the keyboard. Log in**

 **Click on the QLC+ Icon on the desktop once it is loaded locate the blue printer icon top left.**



**Find and Load your saved show.**

**In order to operate your lights you need to go into play mode click the green triangle upper right corner of the program.**



**Go back stage right and turn on the power strip by the cabinet. It is lower down with three cords plugged in. Note: to close the program you need to click the red square.**



**To power down just reverse this process.**